

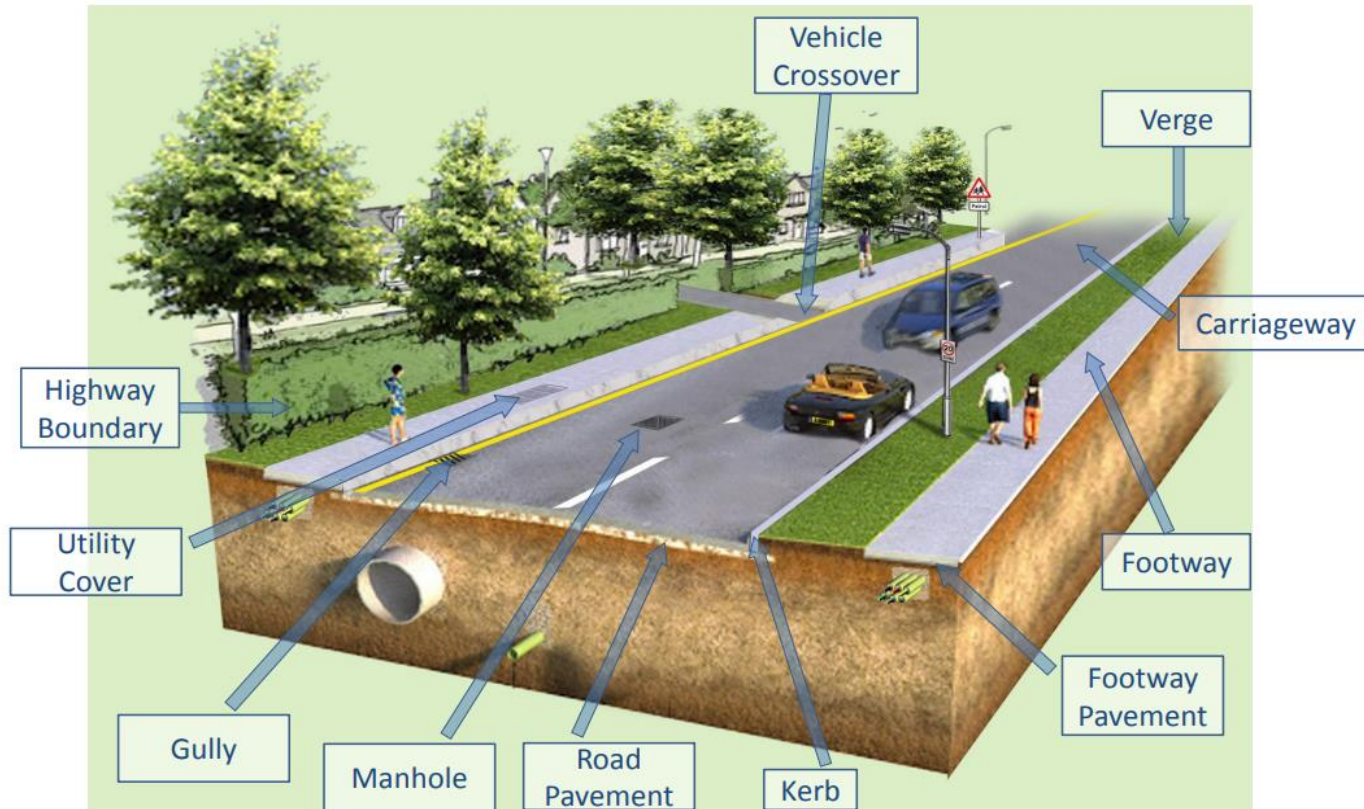
The Highways Maintenance Service

- Reactive services
 - Winter maintenance & responding to faults on the network
- Planned cyclical services – tree works, gully cleansing & grass cuttings
- Planned Schemes (typically 1500 each year)
 - Maintenance
 - Safety
 - Improvements
 - Highways Locality Budget



We filled over **17,000** potholes and cleaned over **90,000** drains/gullies

Highway Technical Terminology



What drainage assets do we manage?

- Carriageway and footway gullies
- Inspection chambers
- Retention/filtration ponds
- Interceptors and soakaways
- Highways drains and outfall structures
- Grips and ditches
- Pumping systems
- Culverts
- French Filter Drains (adjacent to dual carriageways)

Drainage Assets



Gully



Pumping station



Retention pond



Gully and ditch



Headwall



Filter drain

How do we manage the assets?

Reactive Maintenance/Emergency Response

- Placing flood warning signs
- Attempt minor reactive repairs
- Prioritised based on risk of flood to property
- Do not supply sandbags to properties
- Do not have a tanker to remove flood water
- Unable to provide updates during flooding events



How do we manage the assets?

Regular Maintenance

- Gully cleaning frequencies
 - 6 month cycle - approx. 6,850
 - 12 month cycle – approx. 6,250
 - 18 month cycle – approx. 152,900
 - 24 month cycle – approx. 15,000
- Around 129,000 are targeted in a typical year
- Pumps and wet wells



181,280
road gullies maintained



How do we manage the assets?

Planned Works

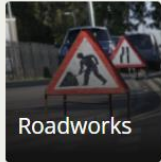
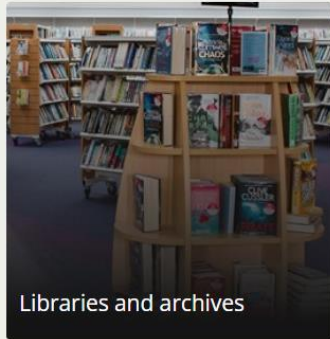
- Bespoke schemes
- Ditches and Grip
- Soakaways
- Balancing Ponds



Riparian Ownership and Responsibilities

- To clear any obstructions so the normal flow of water is not impeded
- To maintain the banks and bed of the watercourse in its natural state
- To maintain any structures on your stretch of the watercourse. These may include culverts, weirs and mill gates
- To accept the natural flow from your upstream neighbour and transfer it downstream without obstruction, pollution or diversion





[More services](#)

What type of flooding or drainage fault is it?



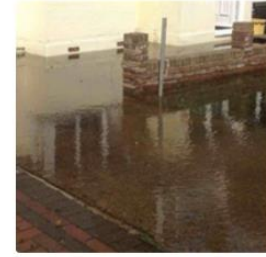
Drain blocked



Road flooded



Footway flooded



Property damaged by flooding



Subway flooded

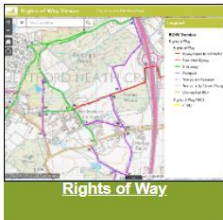
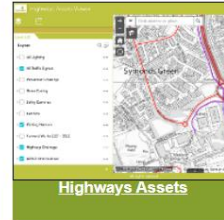


Ditch silted / overgrown or headwall damaged

Herts Insights, managed by the Community Intelligence and Data Science Unit, provides Information and statistics about Hertfordshire and its local communities, gathered from many sources into a 'Hertfordshire view'.

- [Herts Insight](#)

Webmap Viewers for the public



The GIS (Geographic Information Systems) Team provides maps, Webmaps, expert advice, spatial data and analysis. Contact us at gis@hertfordshire.gov.uk

About the Council

[Cookies and privacy](#)
[Accessibility](#)



Highways Assets Viewer



Layer List

- Winter Resilient Network (Out of Herts) ...
- IWP 2023 - 2024 ...
- ▼ Highways Drainage ...
 - Gullies - 6 Monthly Clean ...
 - Gullies - 12 Monthly Clean ...
 - Gullies - 18 Monthly Clean ...
 - Gullies - 24 Monthly Clean ...
- ▼ Administrative Areas ...
 - Wards ...
 - Parishes ...
 - Electoral Divisions ...
 - Districts ...
 - Parliamentary Constituencies ...

